

# Have Working Smoke Alarms:

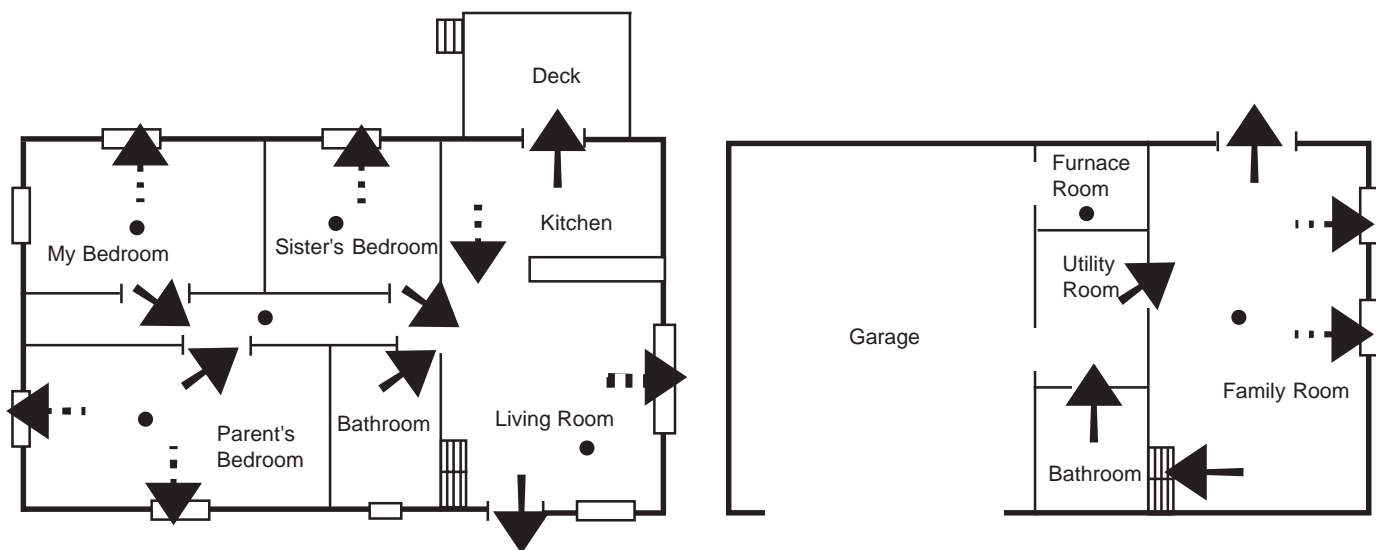
One on **every level** of the home.

and

One **outside each sleeping area**

and

One **in each bedroom.**



● Smoke Alarm that works!!

→ First Exit

→ Second Exit

MP Meeting Place



MP

Make sure your home has some working battery operated alarms (or battery back-up) in case of power loss.

For information call the Olathe Fire Department at 971-6333.