



MEDICAL DIRECTOR CHECKLIST



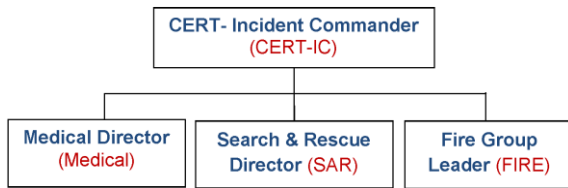
INITIAL SET-UP

- Receive assignment from CERT Incident Commander (CERT-IC) on scope of incident, possible victim count, and weather report
- If not already identified establish medical location
 - uphill/upwind, scalable, and easily accessible for transport, free of hazards
- Obtain resources from CERT-IC or Logistics Section Chief (Logistics) of available personnel and equipment
- Inform personnel of assignments
 - Scribe (Maintain Medical Area Treatment Form)
 - Gatekeepers (for intake and transport areas as volume warrants)
 - Treatment area personnel
 - Security for morgue
- Review the medical areas established by your team
 - Initial triage (gatekeeper, performs head to toe assessment and document)
 - Treatment area (A,B,C's)
 - Immediate (red) needs to be closest to the transport area
 - Delayed (yellow)
 - Walking Wounded (green)
 - Morgue (black)
(Cordon off morgue area in low visibility area)
 - Medical waste area

MEDICAL OPERATIONS AND TRANSPORT

- Log victims in Master Victim's List
- Triage victims
 - update victim log
- Monitor victim status
 - update victim log
- Periodic updates to Operations/CERT IC
- Request additional resources from Logistics as needed
- Monitor weather report
- Transport
 - log victims out
- Collect ALL documentation and turn into CERT-IC

SIMPLE SCALE



FULL SCALE

