



# CERT - SAFETY OFFICER CHECKLIST

*You are assigned by the CERT-Incident Commander to implement a safety and security plan, maintain accountability and to maintain the welfare of CERT members during dangerous operations.*



## Develop a plan to secure the safety of

- The CERT-IC Command Post
- Communications
- Medical Operations areas
- Equipment areas
- Transportation area

*The plan should include the identification of any actual or potential risks and your brief proposal for mitigating or not mitigating each.*

## Periodically remind volunteers about the use of SAFE practices at all times, including appropriate safety equipment/clothing for assignments

## Document all complaints and suspicious occurrences, keep the CERT-IC informed

## Periodically take a PAR (Personnel Accountability Report) and keep the CERT-IC updated on this report.

The **PAR** is where every CERT member on assignment is accounted for in person or via radio. They are logged down as seen so that we do not have any CERT member unaccounted for, lost, hurt or any other number of problems.

## Periodically compare the volunteer sign-in list to the assignment status sheets to:

- Make sure everyone is accounted for (on both lists), apprise the appropriate Section Chief or CERT-IC of discrepancies
- Determine if “on duty” status has been excessive for any team members and make recommendations to the CERT-IC or appropriate section chief to have resolved
- Identify any personnel rotations that should be made and make recommendations to the CERT-IC or the appropriate Section Chief

## Keep in close contact with the CERT-IC and Section Chiefs and attempt to be present during all operations thought to be dangerous. Such as, but not limited to:

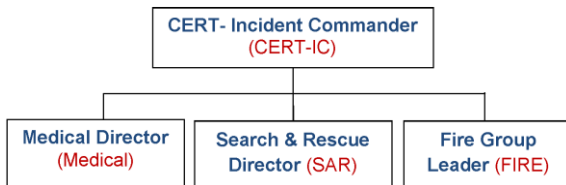
- Rescue/cribbing operations
- Fire operations
- Evacuations

This may require more coordination between CERT-IC and Field OPS than is usually practiced.

## CONSIDERATIONS:

- Keep the peace, prevent assaults, and settle disputes.
- Prevent theft if possible
- Determine the need for **CISM** (Critical Incident Stress debriefing) and discuss with the CERT-IC. Ask for this through the Fire Department.

### SIMPLE SCALE



### FULL SCALE

